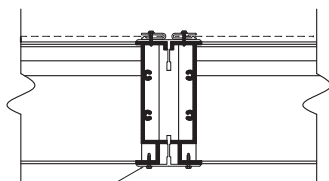


STANDARD CONSTRUCTION

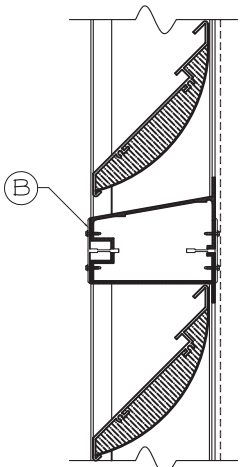
MODEL: UEB-04-300T-D
 FRAME: .081" THK. EXTRUDED ALUM. 6063-T5
 BLADES: .081" THK. EXTRUDED ALUM. 6063-T5
 FASTENERS: #10-16 X 1" PLTD. STL. TEK SCREW
 SCREEN: .050 X 3/4" EXPANDED ALUMINUM SCREEN
 FINISH: MILL

NOTES

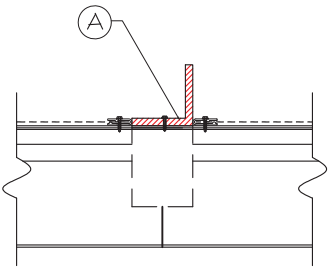
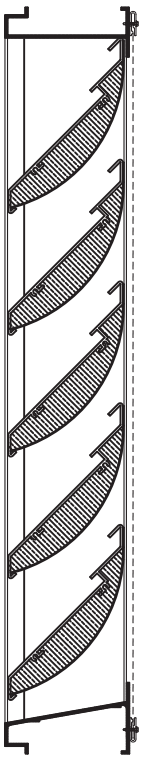
1. ALL LOUVERS TO BE FABRICATED 1/4" UNDER LISTED OPNG. SIZES UNLESS SPECIFIED "ACTUAL"
2. ALL OPNG SIZES TO BE FIELD VERIFIED AND GUARANTEED BY OTHERS PRIOR TO FABRICATION.
3. OTHER SURROUNDING FINISHES ARE FOR REFERENCES ONLY AND TO BE SUPPLIED BY OTHERS.



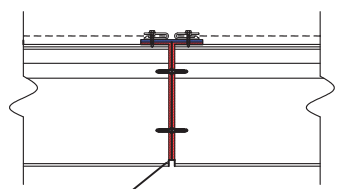
(B) VERTICAL VISIBLE MULLION



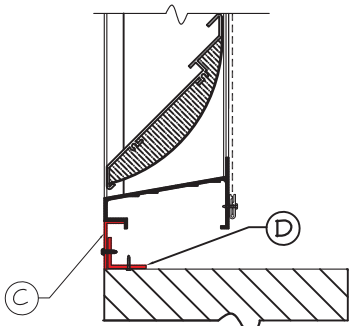
(B) HORIZONTAL VISIBLE MULLION



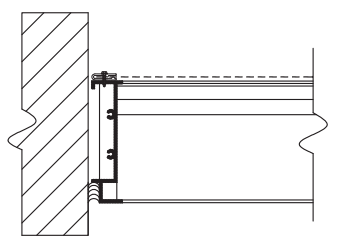
(A) CONTINUOUS BLADE



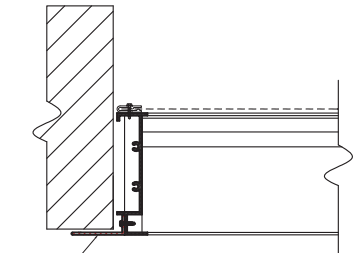
(E) VERTICAL SEMI-INVISIBLE MULLION



(C) FLANGE W/ SUBFRAME



BOX FRAME



(C) FLANGE FRAME

- (A) 2"x2"x1/4" ALUMINUM ANGLE SUPPORT W/ BLADE BRACE
- (B) 2-1/8" TYPICAL T-MULLION
- (C) 1-1/2" FLANGE
- (D) 1-1/4" X 1-1/4" X 1/8" SUBFRAME
- (E) 3-7/8" X 1" X .081" SEMI-INVISIBLE MULLION

		DEPENDABLE PRODUCTS SINCE 1985	
		1855 SOUTH 54TH AVENUE, CICERO, IL. 60650	
ARCH/ENGR:		CUSTOMER:	
PROJECT:		TITLE: UEB-04/SERIES	
DATE:	DRAWN:	DRWG #:	
SCALE: 1:1	CHKD:		

REV.	DESCRIPTION	DATE	BY