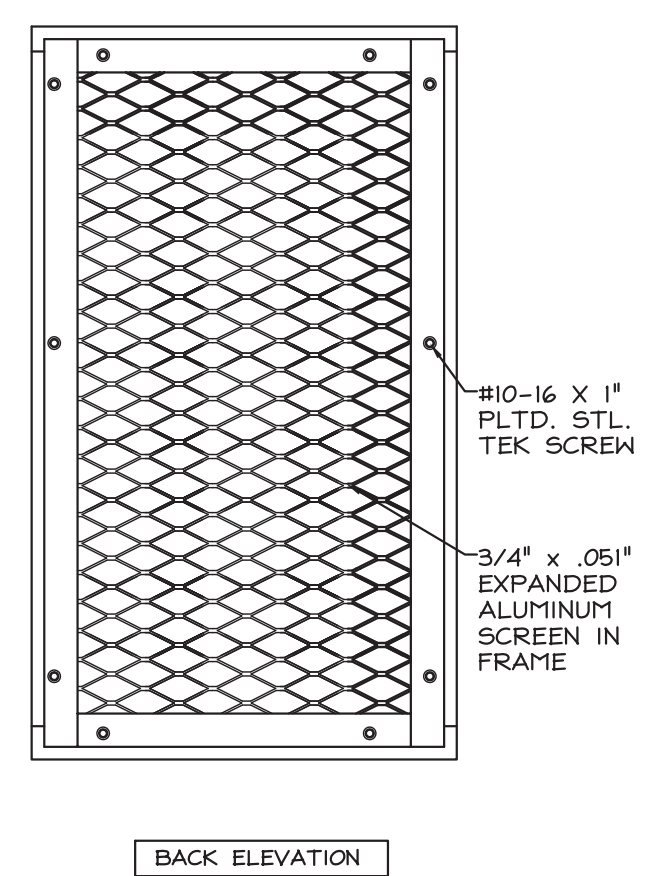
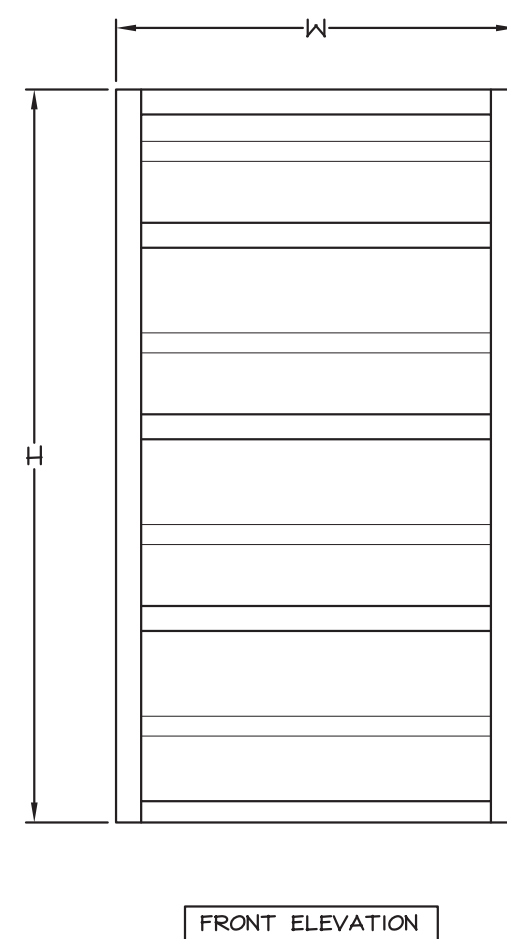
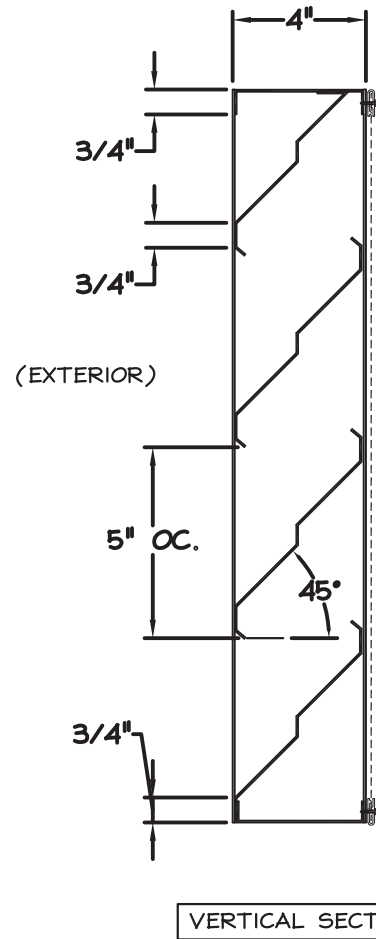
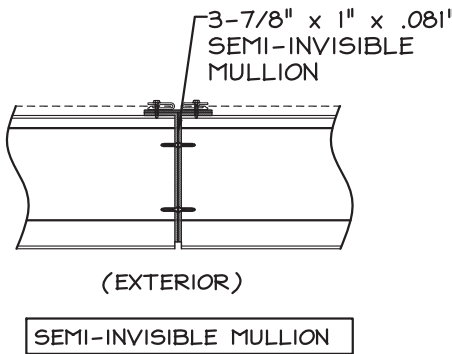
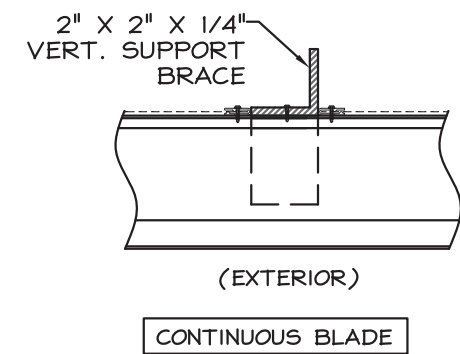
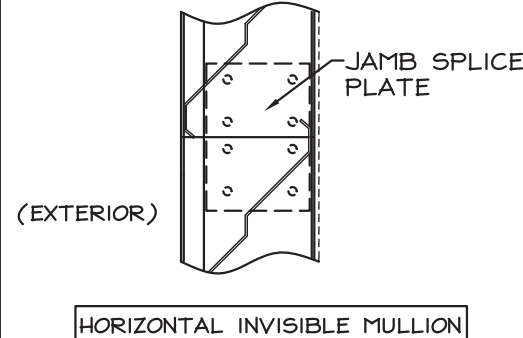
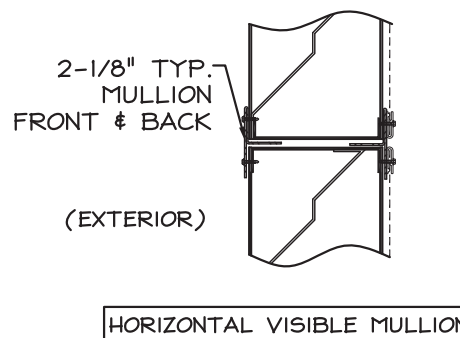
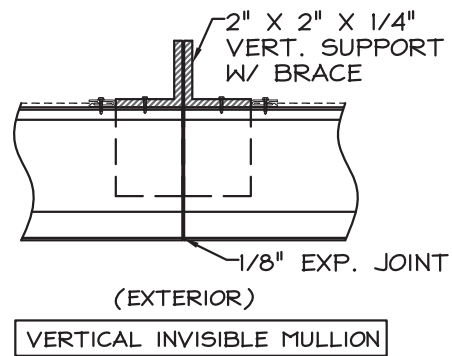
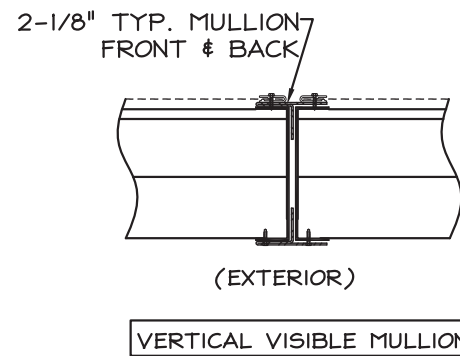
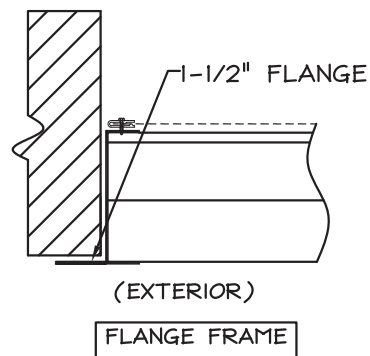
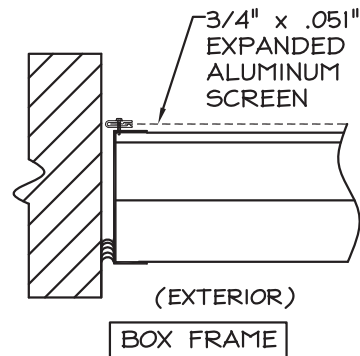


STANDARD CONSTRUCTION

OPTIONAL CONSTRUCTION

STATIONARY GALVANIZED LOUVER

WFA-04/SERIES



REV.	DESCRIPTION	DATE	BY

STANDARD CONSTRUCTION:  
 FRAME: .081" THK. EXTRUDED ALUM. 6063-T5  
 BLADES: .081" THK. EXTRUDED ALUM. 6063-T5  
 FASTENERS: #10-16 X 1" PLTD. STL. TEK SCREW  
 SCREEN: 3/4" x .051" EXPANDED ALUMINUM SCREEN  
 FINISH: MILL

NOTES:  
 1. ALL LOUVERS TO BE FABRICATED 1/4" UNDER LISTED OPENING SIZES UNLESS SPECIFIED "ACTUAL"  
 2. ALL OPENING SIZES TO BE FIELD VERIFIED AND GUARANTEED BY OTHERS PRIOR TO FABRICATION.  
 3. OTHER SURROUNDING FINISHES ARE FOR REFERENCES ONLY AND TO BE SUPPLIED BY OTHERS.

LOUVER SCHEDULE				TAG	QTY	SIZE (WXH)	NOTES
TAG	QTY	SIZE (WXH)	NOTES				

**DOWCO** Products Group

1855 SOUTH 54TH AVENUE, CICERO, IL. 60650

DEPENDABLE PRODUCTS SINCE 1955

ARCH/ENGR: \_\_\_\_\_ CUSTOMER: \_\_\_\_\_

PROJECT: \_\_\_\_\_ TITLE: WFA-04/SERIES

DATE: \_\_\_\_\_ DRAWN: \_\_\_\_\_

SCALE: 1:1 CHKD: \_\_\_\_\_ DRWG #: \_\_\_\_\_